



HX8817A Data Sheet TCON with YUV Input and DAC

Preliminary Version 0.3

Dec, 2004

Himax Technologies, Inc.
10F, No. 605, Chungshan Rd.,
Hsinhua, Tainan County 712, Taiwan

TEL: 886-6-505-0880
FAX: 886-6-505-0891



HX8817A

TCON with YUV Input and DAC

December 2004, Version 0.3

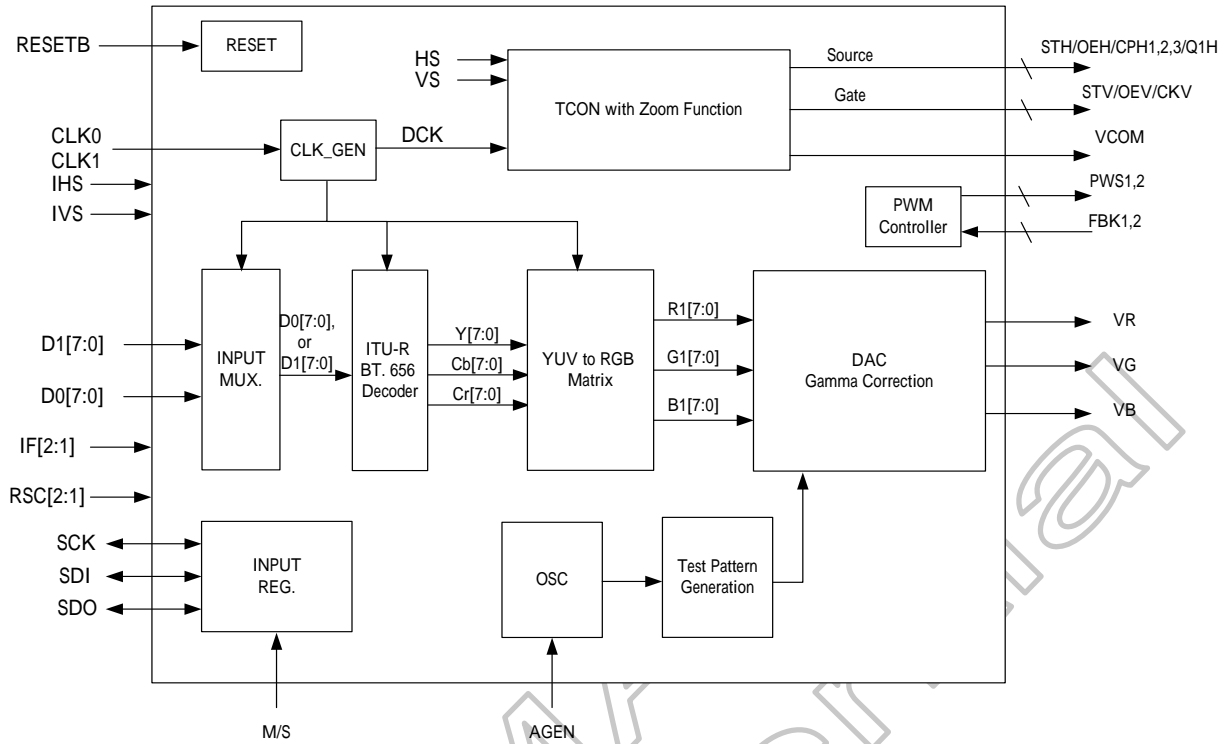
1. General Description

The HX8817A is a TFT-LCD timing controller with 8-bit serial RGB, 18-bit parallel RGB, ITU-R BT. 656 and BT. 601 input interfaces. With the built-in color space conversion circuit, DAC, and operational amplifiers, this controller performs gamma correction and polarity inverted function to convert digital data into line inversion, analog amplified RGB signals for TFT-LCD panel. It also provides horizontal and vertical control timing to TFT-LCD source and gate drivers with 8 different zoom in/zoom out display modes on different display resolutions.

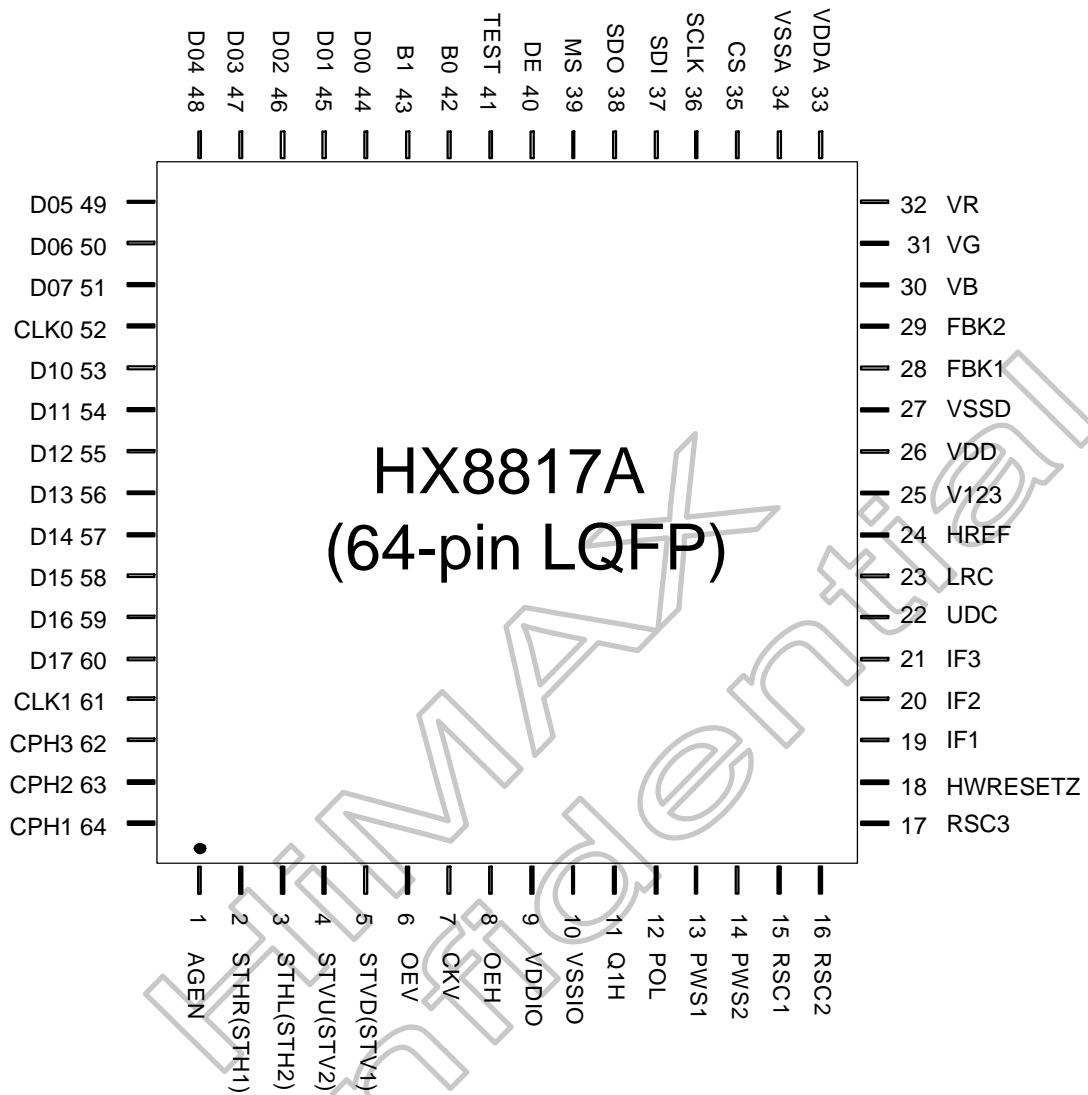
2. Features

- Interlaced YUV 4:2:2 input video signal compliant with ITU-R BT. 601 (8-bit YCbCr) and ITU-R BT. 656 standards
- Support 2 port of ITU-R BT. 656 or 601 8-bit inputs.
- Support 8-bit serial RGB input.
- Support 18-bit parallel RGB input.
- Support NTSC/PAL TV system.
- Support 4 different horizontal resolutions, 480, 960, 1200, and 1440.
- Built-in gamma correction function.
- Provide source and gate drivers control timing.
- Built-in 8 zoom in/zoom out display modes.
- Shift clock signals for the source driver (3- ϕ clock).
- Provide flip and mirror scan control.
- Built-in 2 channel PWM DC-DC booster control circuit for VGH and VGL
- Digital IO voltage: 3.3V or 5V.
- Operation voltage: 5V.
- 64 pin LQFP.

3. Block Diagram



4. Pin Assignment



5. Pin Description

Pin no.	Symbol	I/O	Description
1	AGEN	I	Test pin for aging. (1) Aging with test pattern when AGEN="H" (2) Normal operation when AGEN="L"
2	STHR	O	Start pulse for source driver. (1) STHR is "HiZ", when LRC="H" (2) STHR is "Output", when LRC="L"
3	STHL	O	Start pulse for source driver. (1) STHL is "HiZ", when LRC="L" (2) STHL is "Output", when LRC="H"
4	STVU	O	Start pulse for gate driver. (1) STVU is "HiZ", when UDC="H" (2) STVU is "Output", when UDC="L"
5	STVD	O	Start pulse for gate driver. (1) STVD is "HiZ", when UDC="L" (2) STVD is "Output", when UDC="H"
6	OEV	O	Gate driver output enable control
7	CKV	O	Shift clock for gate driver
8	OEH	O	Source driver output enable control
9	VDDIO		3.3V IO power
10	VSSIO		Ground
11	Q1H	O	R, G, B video signals sample & hold multiplexer control signal for source driver in delta color arrangement modes
12	POL	O	Toggling signal for common electrode generation circuits
13	PWS1	O	Pulse width modulation signal 1, active high
14	PWS2	O	Pulse width modulation signal 2, active low
15	RSC1 ⁽¹⁾	I	Resolution mode setting pin 1
16	RSC2 ⁽¹⁾	I	Resolution mode setting pin 2
17	RSC3 ⁽¹⁾	I	Resolution mode setting pin 3
18	HWRESETZ	I	Active low global reset signal input
19	IF1 ⁽²⁾	I	Interface select pin 1
20	IF2 ⁽²⁾	I	Interface select pin 2
21	IF3 ⁽²⁾	I	Interface select pin 3
22	UDC	I/O	Up / Down scan setting (1) Normal scan, when UDC="L" (2) Reverse scan, when UDC="H"
23	LRC	I/O	Left / Right scan setting (1) Normal scan, when LRC="H" (2) Reverse scan, when LRC="L"
24	HREF	I	Horizontal reference input for ITU-R BT. 601 I/F Or HSYNC for digital RGB interface
25	V123	I	Vertical reference input for ITU-R BT. 601 I/F Or VSYNC for digital RGB interface
26	VDD		Power (5V)
27	VSSD		Ground

28	FBK1	I	PWM feedback voltage. Connect "H" when not used.
29	FBK2	I	PWM feedback voltage. Connect "L" when not used.
30	VB	O	Analog blue signal output
31	VG	O	Analog green signal output
32	VR	O	Analog red signal output
33	VDDA		Analog power (5V)
34	VSSA		Analog ground
35	CS	I/O	Chip Select
36	SCLK	I/O	3-Wire Serial bus clock
37	SDI	I	3-Wire Serial bus data input
38	SDO	O	3-Wire Serial bus data output
39	MS	I	Master mode selection for serial interface
40	DE	I	DE for 8-bit/18-bit digital RGB interface
41	NPC/DS	O	NTSC/PAL output pin when register DS=0 (1) NTSC mode when NPC="H" (2) PAL mode when NPC="L" Dual Scan output for zoom modes when register DS=1
42	B0	I	B0
43	B1	I	B1
44	D00	I	Digital image data input port 0 bit0 or B2
45	D01	I	Digital image data input port 0 bit1 or B3
46	D02	I	Digital image data input port 0 bit2 or B4
47	D03	I	Digital image data input port 0 bit3 or B5
48	D04	I	Digital image data input port 0 bit4 or G0
49	D05	I	Digital image data input port 0 bit5 or G1
50	D06	I	Digital image data input port 0 bit6 or G2
51	D07	I	Digital image data input port 0 bit7 or G3
52	CLK0	I	27.0MHz Main input clock for port 0
53	D10	I	Digital image data input port 1 bit0 or G4
54	D11	I	Digital image data input port 1 bit1 or G5
55	D12	I	Digital image data input port 1 bit2 or R0
56	D13	I	Digital image data input port 1 bit3 or R1
57	D14	I	Digital image data input port 1 bit4 or R2
58	D15	I	Digital image data input port 1 bit5 or R3
59	D16	I	Digital image data input port 1 bit6 or R4
60	D17	I	Digital image data input port 1 bit7 or R5
61	CLK1	I	27.0MHz Main input clock for port 1 or CLK for 8-bit/18-bit digital RGB interface
62	CPH3	O	Shift clock ϕ 3 for source driver
63	CPH2	O	Shift clock ϕ 2 for source driver
64	CPH1	O	Shift clock ϕ 1 for source driver

Note:

(1) Resolution setting:

RSC3	RSC2	RSC1	Resolution mode(H × V)
L	L	L	480 × 234 Delta
L	L	H	960 × 234 Delta
L	H	L	-
L	H	H	-
H	L	L	-
H	L	H	960 × 234 Stripe
H	H	L	1200 × 234 Stripe
H	H	H	1440 × 234 Stripe

(2) Interface setting:

IF3	IF2	IF1	Interface
L	L	L	656 port 0 (D00~D07, CLK0)
L	L	H	656 port 1 (D10~D17, CLK1)
L	H	L	601 8-bit port 0 (D00~D07, CLK0, HREF, V123)
L	H	H	601 8-bit port 1 (D10~D17, CLK1, HREF, V123)
H	L	L	Digital RGB 8-bit (D00~D07, CLK0, HS, VS, DE)
H	L	H	Digital RGB 8-bit (D10~D17, CLK1, HS, VS, DE)
H	H	L	-
H	H	H	Digital RGB 18-bit (R5~R0, G5~G0, B5~B0, CLK1, HS, VS, DE)

6. Functional Description

6.1 Register settings:

Panel setup (R0h)

Bit	IB7	IB6	IB5	IB4	IB3	IB2	IB1	IB0
Name	EXT1	RSTB0	IIF3	IIF2	IIF1	RES3	RES2	RES1
Default	1	1	0	0	0	1	1	1

EXT1: Selects external pins (EXT1=H) or internal registers (EXT1=0) to setup interface and resolution.

RSTB0: Firmware reset. Low enable

IIF3~IIF1: Set input port and interface type and ignore pin 19~21 when EXT1=0.

IIF3	IIF2	IIF1	Interface
L	L	L	656 port 0 (D00~D07, CLK0)
L	L	H	656 port 1 (D10~D17, CLK1)
L	H	L	601 8-bit port 0 (D00~D07, CLK0, HREF, V123)
L	H	H	601 8-bit port 1 (D10~D17, CLK1, HREF, V123)
H	L	L	Digital RGB 8-bit (D00~D07, CLK0, HS, VS, DE)
H	L	H	Digital RGB 8-bit (D10~D17, CLK1, HS, VS, DE)
H	H	L	-
H	H	H	Digital RGB 18-bit (R5~R0, G5~G0, B5~B0, CLK1, HS, VS, DE)

RES3~RES1: Set display resolution and ignore pin 15~17 when EXT1=0.

RES3	RES2	RES1	Resolution mode(H × V)
L	L	L	480 × 234 Delta
L	L	H	960 × 234 Delta
L	H	L	-
L	H	H	-
H	L	L	-
H	L	H	960 × 234 Stripe
H	H	L	1200 × 234 Stripe
H	H	H	1440 × 234 Stripe

Functional Control 1 (R1h)

Bit	IB7	IB6	IB5	IB4	IB3	IB2	IB1	IB0
Name	EXT2	ILRC	IUDC	VZ_mode	DS	ZX3	ZX2	ZX1
Default	1	1	0	1	0	1	1	1

EXT2: Selects external pins (EXT2=H) or internal registers (EXT2=0) to setup mirror and flip functions.

IUDC: Sets gate driver shift direction and output value at UDC pin when EXT2=0.

ILRC: Sets source driver shift direction and output value at LRC pin when EXT2=0.

VZ_mode: Vertical zoom-in algorithm select. Set VZ=0 for UPS017 algorithm.

DS: Vertical zoom-in with gate driver with dual scan function.

ZX3~ZX1: Sets display modes for 1440, 1200, 960 stripe panels with ITU-R BT 656 or 601 interfaces. In 480, 960 delta panels, or in digital RGB interfaces, only full mode can be displayed.

ZX3	ZX2	ZX1	Display Mode
H	H	H	Full
H	H	L	Zoom1
H	L	H	Zoom1-wide
H	L	L	Normal
L	H	H	Zoom2
L	H	L	Wide
L	L	H	Zoom2-wide
L	L	L	Zoom3

See Functional Description for detail

Functional Control 2 (R2h)

Bit	IB7	IB6	IB5	IB4	IB3	IB2	IB1	IB0
Name	CFIN_S	OVER	PH2	PH1	OEH_S	POL_S	HREFP	VREFP
Default	1	1	1	1	1	1	1	1

CFIN_S: Sets delta panel's input data sequence for 8-bit digital RGB interface.

1 => odd line is RGB; even line is GBR. (AUO)

0 => odd line is RGB; even line is BRG. (PVI)

OVER: Sets display period in ITU-R BT. 656 or 601 modes.

1 => 53.3us of active data is displayed on the panel.

0 => 50.3 us of active data is displayed on the panel.

PH2~PH1: Sets delta panel's output CPH phase in ITU-R BT. 656 or 601 modes.

1X => CPH for odd and even lines are in phase.

01 => even line leads odd line by one half dot. (AUO)

00 => even line lags odd line by one half dot. (PVI)

OEH_S: Sets OEH's polarity

1 => oeh is normal polarity (active low)

0 => oeh is opposite polarity (active high)

POL_S: Sets relationship between DAC output and POL.

1 => with input gray scale increasing, DAC outputs ascend while POL is "H" and descend while POL is "L".

0 => with input gray scale increasing, DAC outputs descend while POL is "H" and ascend while POL is "L".

HREFP: Sets HREF polarity of ITU-R BT. 601, set 0 for reversed signal.

VREFP: Sets VREF polarity of for ITU-R BT. 601, 0 for reversed signal.

Input Horizontal Start Position Offset (R3h)

Bit	IB7	IB6	IB5	IB4	IB3	IB2	IB1	IB0
Name				HPOF4	HPOF3	HPOF2	HPOF1	HPOF0
Default				0	0	0	0	0

HPOF4~HPOF0: set 8-bit RGB input data position offset

HPOF4	HPOF3	HPOF2	HPOF1	HPOF0	Dot Steps
1	1	1	1	1	-1
1	1	1	1	0	-2
1	1	1	0	1	-3
1	1	1	0	0	-4
1	1	0	1	1	-5
1	1	0	1	0	-6
1	1	0	0	1	-7
1	1	0	0	0	-8
1	0	1	1	1	-9
1	0	1	1	0	-10
1	0	1	0	1	-11
1	0	1	0	0	-12
1	0	0	1	1	-13
1	0	0	1	0	-14
1	0	0	0	1	-15
1	0	0	0	0	-16
0	0	0	0	0	0
0	0	0	0	1	+1
0	0	0	1	0	+2
0	0	0	1	1	+3
0	0	1	0	0	+4
0	0	1	0	1	+5
0	0	1	1	0	+6
0	0	1	1	1	+7
0	1	0	0	0	+8
0	1	0	0	1	+9
0	1	0	1	0	+10
0	1	0	1	1	+11
0	1	1	0	0	+12
0	1	1	0	1	+13
0	1	1	1	0	+14
0	1	1	1	1	+15

Horizontal Position (R4h)

Bit	IB7	IB6	IB5	IB4	IB3	IB2	IB1	IB0
Name				HPOS4	HPOS3	HPOS2	HPOS1	HPOS0
Default				0	0	0	0	0

HPOS4~HPOS0: set horizontal display position

HPOS4	HPOS3	HPOS2	HPOS1	HPOS0	Steps
1	1	1	1	1	-1
1	1	1	1	0	-2
1	1	1	0	1	-3
1	1	1	0	0	-4
1	1	0	1	1	-5
1	1	0	1	0	-6
1	1	0	0	1	-7
1	1	0	0	0	-8
1	0	1	1	1	-9
1	0	1	1	0	-10
1	0	1	0	1	-11
1	0	1	0	0	-12
1	0	0	1	1	-13
1	0	0	1	0	-14
1	0	0	0	1	-15
1	0	0	0	0	-16
0	0	0	0	0	0
0	0	0	0	1	+1
0	0	0	1	0	+2
0	0	0	1	1	+3
0	0	1	0	0	+4
0	0	1	0	1	+5
0	0	1	1	0	+6
0	0	1	1	1	+7
0	1	0	0	0	+8
0	1	0	0	1	+9
0	1	0	1	0	+10
0	1	0	1	1	+11
0	1	1	0	0	+12
0	1	1	0	1	+13
0	1	1	1	0	+14
0	1	1	1	1	+15

Vertical Position (R5h)

Bit	IB7	IB6	IB5	IB4	IB3	IB2	IB1	IB0
Name					VPOS3	VPOS2	VPOS1	VPOS0
Default					0	0	0	0

VPOS [3:0]: Used to set the Gate Start Position.

VPOS3	VPOS2	VPOS1	VPOS0	Line Step
1	1	1	1	-1
1	1	1	0	-2
1	1	0	1	-3
1	1	0	0	-4
1	0	1	1	-5
1	0	1	0	-6
1	0	0	1	-7
1	0	0	0	-8
0	0	0	0	0
0	0	0	1	+1
0	0	1	0	+2
0	0	1	1	+3
0	1	0	0	+4
0	1	0	1	+5
0	1	1	0	+6
0	1	1	1	+7

HIMAX Confidential

Aging Pattern (R6h)

Bit	IB7	IB6	IB5	IB4	IB3	IB2	IB1	IB0
Name		PWMON			AGE3	AGE2	AGE1	AGE0
Default	0	0	0	0	1	1	1	1

PWMON: enable PWM function

1 => PWM enabled

0 => PWM disabled

AG3~AG0: Set aging pattern

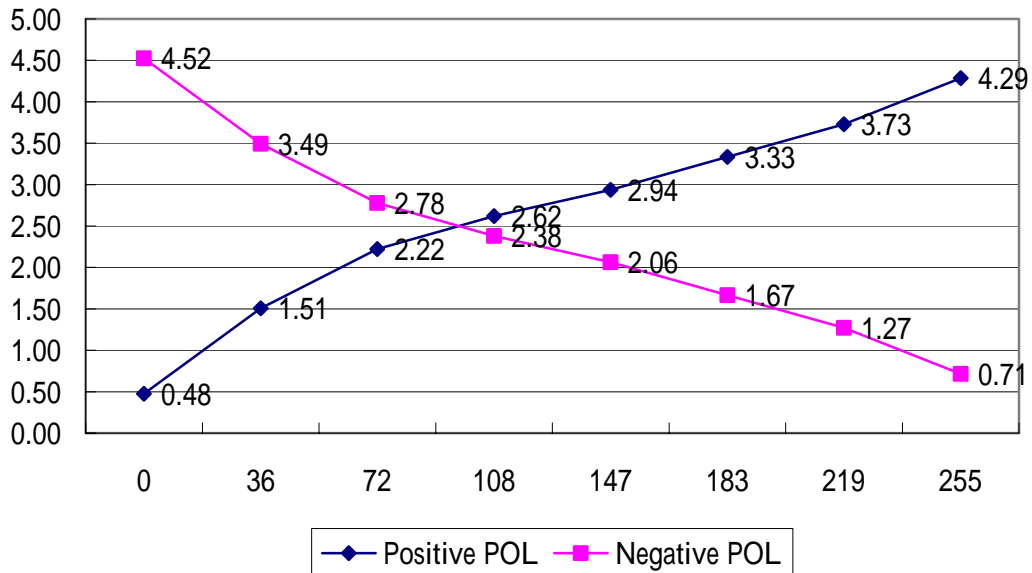
AG3	AG2	AG1	AG0	Aging Pattern
H	H	H	H	Auto-looping
H	L	H	L	Flicker
H	L	L	H	Black
H	L	L	L	Color Bar
L	H	H	H	White Grayscale
L	H	H	L	Blue Grayscale
L	H	L	H	Green Grayscale
L	H	L	L	Red Grayscale
L	L	H	H	White
L	L	H	L	Blue
L	L	L	H	Green
L	L	L	L	Red



Gamma Correction Reference 1~8 (R7h~REh)

	IB7	IB6	IB5	IB4	IB3	IB2	IB1	IB0	Default
R7h				RV14	RV13	RV12	RV11	RV10	0x06
R8h				RV24	RV23	RV22	RV21	RV20	0x13
R9h				RV34	RV33	RV32	RV31	RV30	0x1C
RAh				RV44	RV43	RV42	RV41	RV40	0x11
RBh				RV54	RV53	RV52	RV51	RV50	0x15
RCh				RV64	RV63	RV62	RV61	RV60	0x0A
RDh				RV74	RV73	RV72	RV71	RV70	0x0F
REh				RV84	RV83	RV82	RV81	RV80	0x16

RVn[4:0]: Set 8 gamma correction reference voltage values for gray scale 0, 36, 72, 108, 147, 183, 219, and 255 in positive polarity separately. For RV1~RV3, output reference voltage is $\frac{RVn[4:0]}{63} \times V_{DDA}$. The register values greater than 6 (binary 0110) are recommended for RV1~RV3 to keep minimum voltage higher than 0.5V. For RV4 or RV5, output reference voltage is $\frac{RVn[4:0]+16}{63} \times V_{DDA}$. For RV6~RV8, output reference voltage is $\frac{RVn[4:0]+32}{63} \times V_{DDA}$. The register values smaller than 25 (binary 11001) are recommended for RV6~RV8 to keep maximum voltage lower than 4.5V. The default gamma curve for both positive and negative polarity are shown in the following figure.



FIELD MIX MODE (RFh)

Bit	IB7	IB6	IB5	IB4	IB3	IB2	IB1	IB0
Name	FIELDPAL1	FIELDPAL0	FIELDNTSC1	FIELDNTSC0	NPCMSEL	NPCMVAL		
Default	0	1	0	0	0	1	0	0

FIELDPAL [1:0] : When PAL Mode, the relationship of first line in Even Field and Odd Field

- 00 : First line in Even Field = First line in Odd Field
- 01 : First line in Even Field = First line in Odd Field + 1
- 10 : No Use
- 11 : First line in Even Field = First line in Odd Field - 1

FIELDNTSC [1:0] : When NTSC Mode, the relationship of first line in Even Field and Odd Field

- 00 : First line in Even Field = First line in Odd Field
- 01 : First line in Even Field = First line in Odd Field + 1
- 10 : No Use
- 11 : First line in Even Field = First line in Odd Field - 1

NPCMSEL : Input Format Select

- 0 : Auto detect NTSC or PAL mode
- 1 : NTSC or PAL mode selected by register RFh, bit 2 (NPCMVAL)

NPCMVAL : When NPCMSEL = 1, set display format by

- 0 : PAL Mode
- 1 : NTSC Mode

Himax Confidential

6.2 Color Space Conversion:

The input data should be compliant to ITU-R BT. 601 8-bit data format or ITU-R BT. 656 standards and be connected to input pins D17~D10 or D07~D00 as listed in the following table.

Signal	ITU-R BT. 601 and BT. 656			
D17	CB07	Y07	CR07	Y17
D16	CB06	Y06	CR06	Y16
D15	CB05	Y05	CR05	Y15
D14	CB04	Y04	CR04	Y14
D13	CB03	Y03	CR03	Y13
D12	CB02	Y02	CR02	Y12
D11	CB01	Y01	CR01	Y11
D10	CB00	Y00	CR00	Y10

In ITU-R BT. 656 data streams the included codes are used for identifying even and odd frames, blanking and active video data. The codes start with the byte sequence FF 00 00, followed by the reference code byte. The code byte contains vertical and horizontal blanking as well as odd and even field information. The code information will be decoded internally and used for timing control.

MSB							LSB
7	6	5	4	3	2	1	0
1	F ⁽¹⁾	V ⁽²⁾	H ⁽³⁾	P3	P2	P1	P0

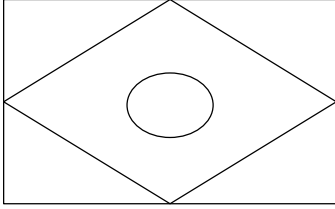
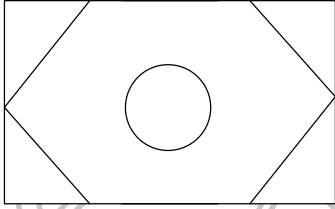
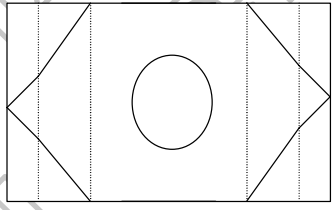
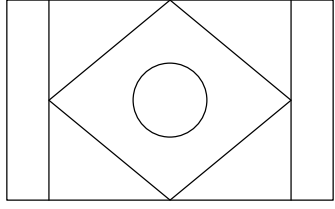
Notes

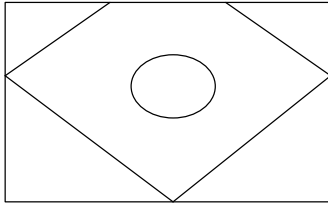
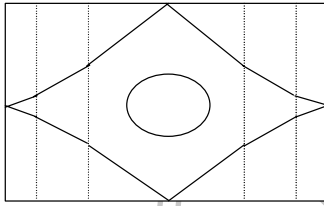
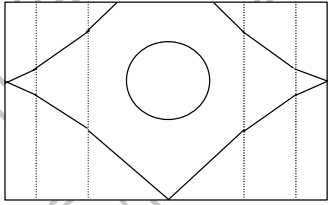
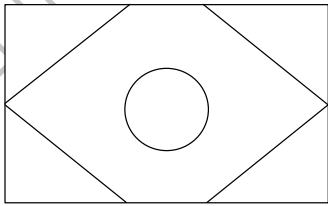
F=0: odd field; F=1: even field.

V=0: in active field lines; V=1: in field blanking.

H=0: SAV(Start of Active video); H=1: EAV(End of Active video).

6.3 Zoom in/out display mode setting:

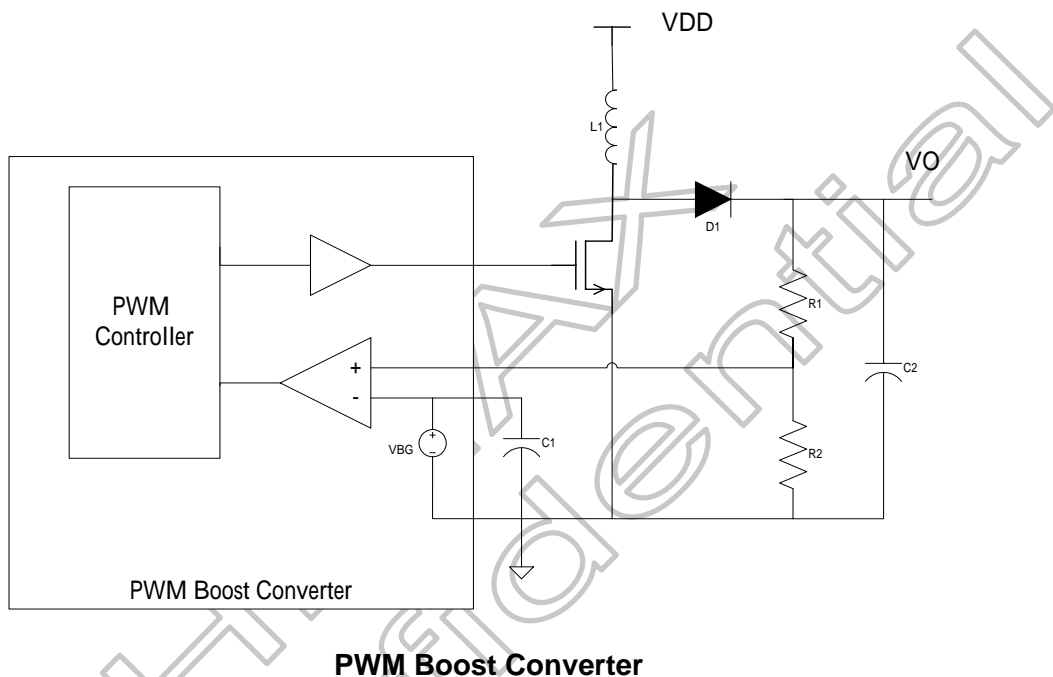
Display Mode	ZX1	ZX2	ZX3	Display Characteristics (4:3 aspect-ratio input signal)	Remark
Full	H	H	H		Input signals are displayed on full screen.(To display 4:3 signal on 16:9 screen)
Zoom1	L	H	H		Central 176 lines of input signals are displayed on full screen. (Vertically extension, zoom factor =4/3).
zoom-Wide1	H	L	H		Central 176 lines of input signals are displayed on full screen. (Vertically extension and different horizontal timing scaling).
Normal	L	L	H		Input signal(4:3) are displayed on center 75% screen.(4:3 aspect-ratio).

Display Mode	ZX1	ZX2	ZX3	Display Characteristics (4:3 aspect-ratio input signal)	Remark
Zoom2	H	H	L		Lower 205 lines of input signals are displayed on full screen.(Zoom factor=8/7, vertically offset extension).
Wide	L	H	L		Input signals are displayed on full screen.(Different horizontal timing scaling).
Zoom-Wide2	H	L	L		Lower 205 lines of input signal are displayed on full screen. (Vertically extension and different horizontal timing scaling).
Zoom3	L	L	L		Center 205 lines of input signal are displayed on full screen. (Vertically extension, zoom factor=8/7).

6.4 Aging Pattern Generator:

For simplifying TFT-LCD burn-in process, an aging pattern generator is embedded into HX8817. In normal operation, AGEN pin should be pulled down to VSS. When AGEN pin is pulled up to VDD or no clock detected, HX8817 will operate at aging mode and generate eight sets of aging patterns including black, white, red, green, blue, gray scale(R, G, B, W), and color bar.

6.5 PWM Booster Converter:



The PWM boost converter can be used to generate VGH and VGL with external application circuits. The DC-DC converter is highly efficient switching voltage generator circuits that generate the high voltage level required by gate drivers. HX8817A contains 2 sets of sub-circuits of the PWM buck/boost converter, including a precision reference voltage, comparator, PWM controlling logic, and the output buffer. The boost converter uses an external power transistor to provide maximum efficiency and to minimize the number of external components. The VO output voltage level can be adjusted by R1 and R2.

Please be noted that the output pulse width modulation signal PWS1 for booster is active high, while the other signal PWS2 for buck-booster is active low. The voltage swing of PWS1 and PWS2 are both from VSSIO to VDDIO. The internal comparison voltages for feedback pin FB1 and FB2 are 3V and 2V, respectively.

7. DC Characteristics

7.1 Absolute maximum ratings:

Parameter	Symbol	Rating	Units
Power supply	$V_{DD}^{(1)}$	-0.3 to 6.0	V
Output voltage	V_R, V_G, V_B	-0.3 to $V_{DD} + 0.3$	V
Storage temperature	T_{STG}	-40 to 95	°C

Note: (1) For V_{DD}, V_{DDA} .

7.2 Recommended operating conditions:

Parameter	Symbol	Min.	Typ.	Max.	Units
Power supply	V_{IO}	3	3.3	3.6	V
Power supply	V_{DD}, V_{DDA}	4.5	5.0	5.5	V
Operating temperature	T_{OPR}	-30	-	85	°C

7.3 Electrical Characteristics:

Parameter	Symbol	Condition	Min	Typ	Max	Units
Input low current	I_{IL}	No pull-up or pull-down	-1	-	1	μA
Input high current	I_{IH}	No pull-up or pull-down	-1	-	1	μA
Tri-state leakage current	I_{OZ}		-10	-	10	μA
Input capacitance	C_{IN}		-	3	-	pF
Output capacitance	C_{OUT}		3	-	6	pF
Logic input low voltage	$V_{IL}^{(1)}$	CMOS	-	-	$0.7V_{IO}$	V
Logic input high voltage	$V_{IH}^{(1)}$	CMOS	$0.3V_{IO}$	-	-	V
Output low voltage	V_{OL}	$I_{OL}=4mA$	-	-	$0.2V_{IO}$	V
Output high voltage	V_{OH}	$I_{OH}=-4mA$	$0.8V_{IO}$	-	-	V
Input pull up/down resistance	R_I	$V_{IL}=0V$ or $V_{IH}=V_{IO}$	20	-	100	$k\Omega$

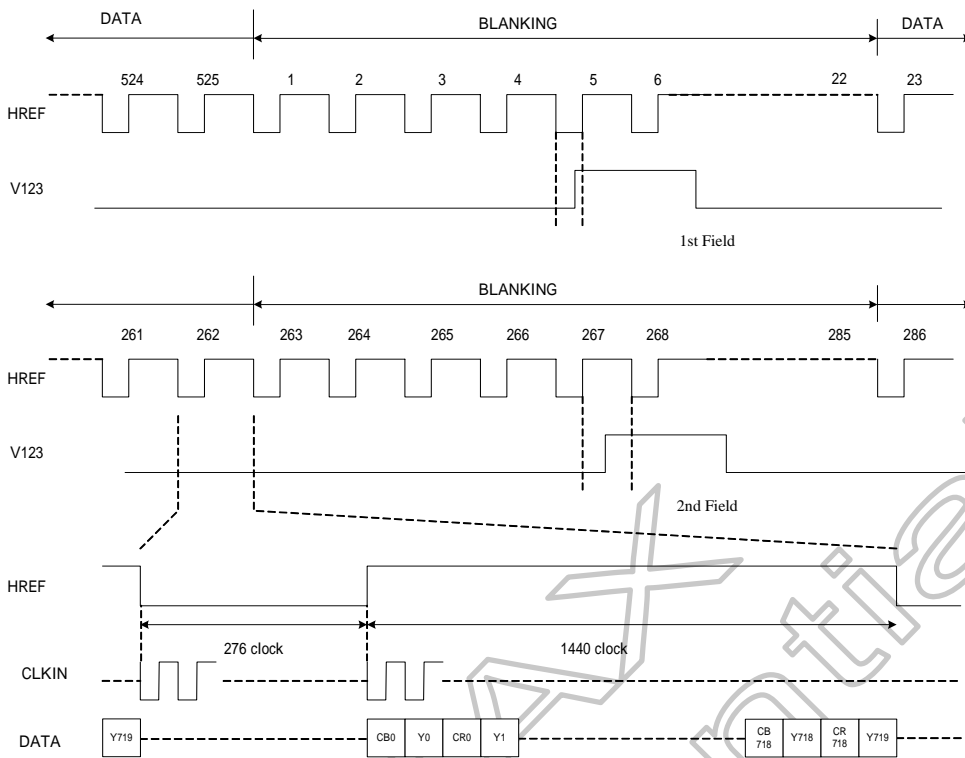
8. AC Characteristics

8.1 Input signal characteristics

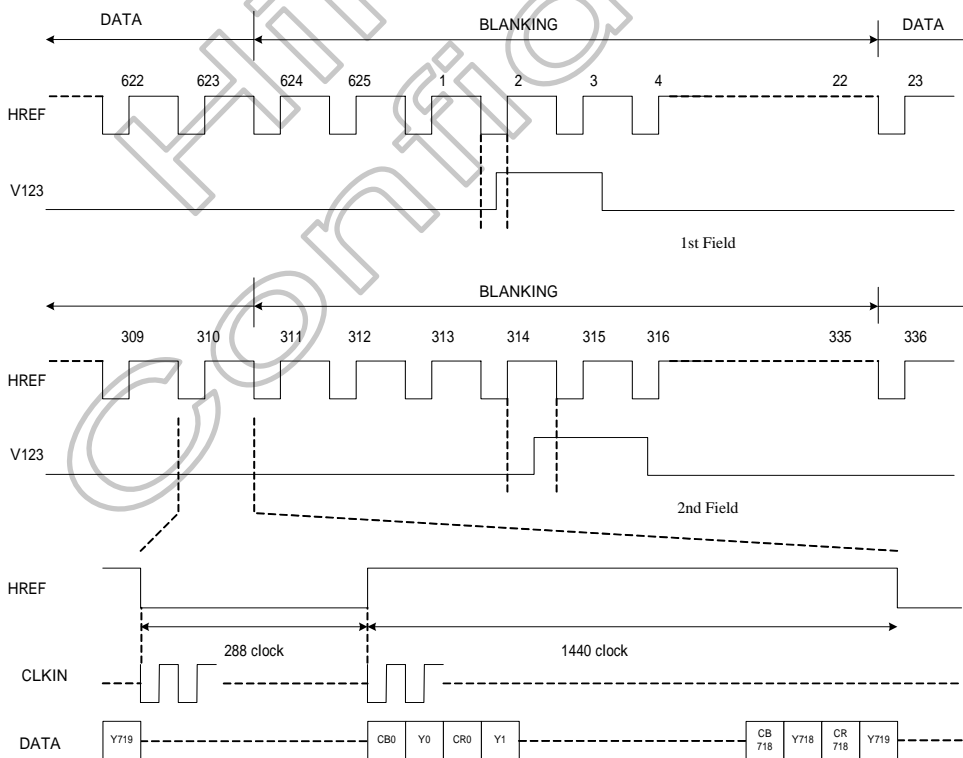
8.1.1 ITU-R BT.601 8-bit or ITU-R BT.656 8-bit

PARAMETER	Symbol	Min.	Typ.	Max.	Unit	
CLK period	t_c	-	37	-	ns	
CLK Duty	t_{CW}	40	50	60	%	
HREF period	t_H	NTSC	-	63.5	-	us
		NTSC	-	1716	-	t_c
		PAL	-	64	-	us
		PAL	-	1728	-	t_c
HREF pulse width	t_{HD}	NTSC	-	53.3	-	us
		NTSC	-	1440	-	t_c
		PAL	-	53.3	-	us
		PAL	-	1440	-	t_c
V123 period	t_V	NTSC	-	16.6	-	ms
		NTSC	-	262.5	-	t_H
		PAL	-	20	-	ms
		PAL	-	312.5	-	t_H
V123 pulse width	t_{VP}	-	1.5	-	t_H	
Data setup time	t_{DS}	10	-	-	ns	
Data hold time	t_{DH}	10	-	-	ns	

Himax
Confidential



ITU-R BT. 601 NTSC Input Timing



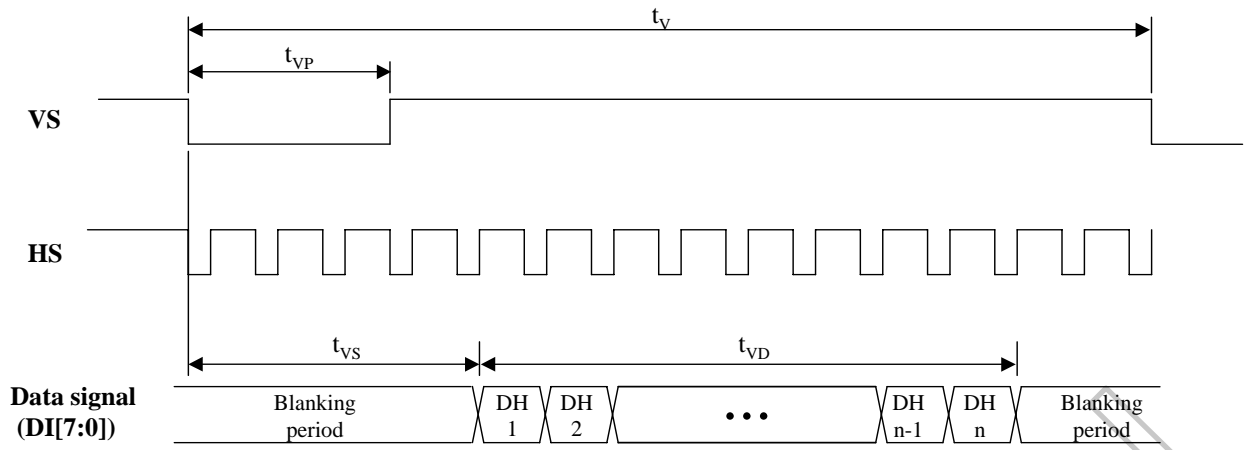
ITU-R BT. 601 PAL Input Timing

8.1.2 8-bit Digital RGB Input Interface

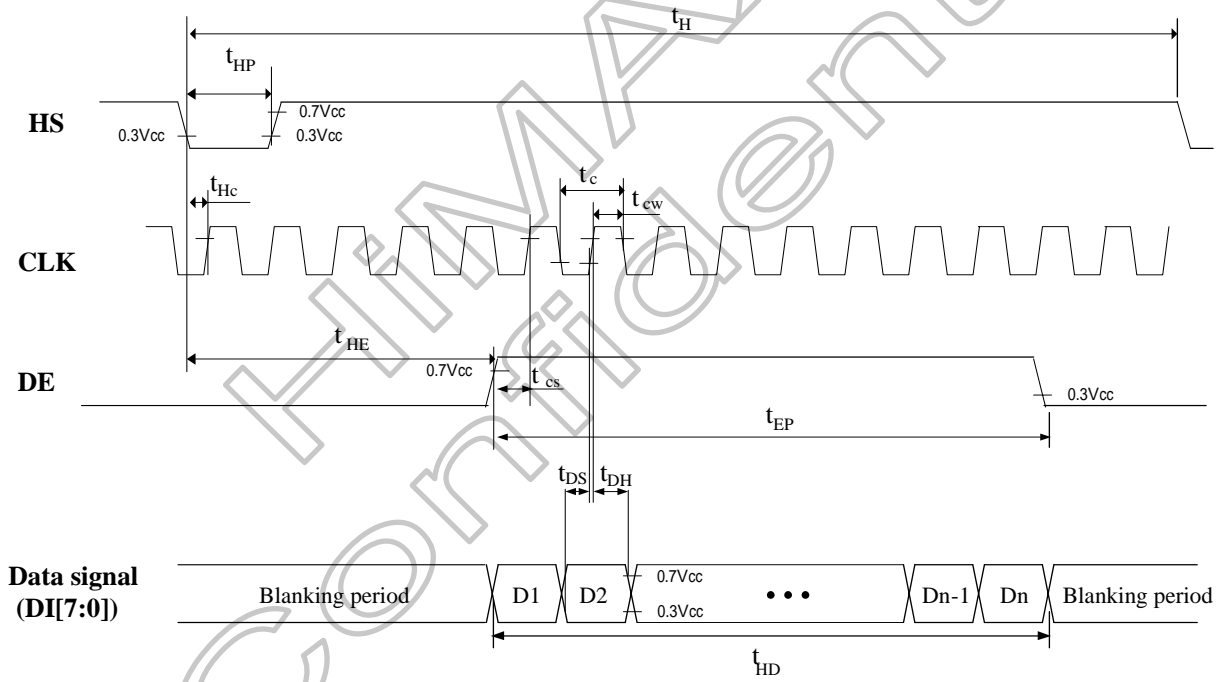
PARAMETER	Symbol	Resolution				Unit	
		1440	1200	960	480		
CLK period	t_c	35.3	42.3	52.9	105.8	ns	
CLK duty	t_{CW}	50±10				%	
HS period	t_H	1800	1500	1200	600	t_c	
Display period	t_{HD}	1440	1200	960	480	t_c	
HS pulse width min	t_{HP} Min	5				t_c	
HS-DE time	t_{HE}	Min	162	135	108	54	t_c
		Max	360	300	240	120	t_c
HS to internal DE when DE fixed low	t_{HE}	306	255	204	102	t_c	
VS period	t_v	NTSC	262			t_H	
		PAL	312			t_H	
VS pulse width	t_{VP} Min	3				t_H	
Vertical display position	t_{VS}	NTSC	18			t_H	
		PAL	26			t_H	
Setup time (Data, HS, DE)	t_{DS} Min	10				ns	
Hold time	t_{DH} Min	10				ns	

8.1.3 18-bit Digital RGB Input Interface

PARAMETER	Symbol	Resolution				Unit	
		1440	1200	960	480		
CLK Period	t_c	105.8	127	158.8	317.5	ns	
CLK Duty	t_{CW}	50±10				%	
HS Period	t_H	600	500	400	200	t_c	
HS display period	t_{HD}	480	400	320	160	t_c	
HS pulse width	t_{HP} Min	5				t_c	
HS-DE time	t_{HE}	Min	54	45	36	18	t_c
		Max	120	100	80	40	t_c
HS to internal DE when DE fixed low	t_{HE}	102	85	68	34	t_c	
VS period	t_v	NTSC	262			t_H	
		PAL	312			t_H	
VS pulse width	t_{VP} Min	3				t_H	
Vertical display position	t_{VS}	NTSC	18			t_H	
		PAL	26			t_H	
Setup time (Data, HS, DE)	t_{DS} Min	10				ns	
Hold time	t_{DH} Min	10				ns	



Input vertical timing



Input horizontal timing

8.2 Output signal characteristics

8.2.1 ITU-R BT.601 or ITU-R BT.656 in full mode

PARAMETER		Symbol	Min.	Typ.	Max.	Unit.
Display period		T_{ACT}	-	1360	-	t_C
Clock pulse duty		t_{CWH}	33	50	67	%
STH setup time		t_{SUH}	-	1	-	t_C
STH pulse width		t_{STH}	-	2	-	t_C
OEH pulse width		t_{OEH}	-	36	-	t_C
Sample & hold disable time		t_{DIS1}	-	108	-	t_C
CKV pulse width		t_{CKV}	-	108	-	t_C
OEV pulse width		t_{OEV}	-	144	-	t_C
IHS-OEH time (1)		t_1	-	126	-	t_C
IHS -CKV time		t_2	-	72	-	t_C
IHS -OEV time		t_3	-	18	-	t_C
STV setup time		t_{SUV}	-	54	-	t_C
STV pulse width		t_{STV}	-	1	-	t_H
V123-STV time	NTSC	t_{VS1}	-	19	-	t_H
	PAL	t_{VS1}	-	27	-	t_H
OEH-STV time		t_{OES}	-	2	-	t_H

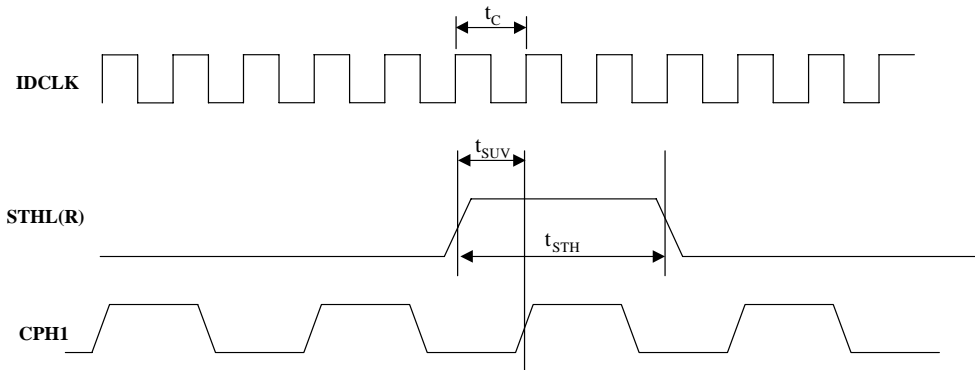
Note 1: IHS is internally generated horizontal sync signal for reference.

8.2.2 8-bit Digital RGB Interface

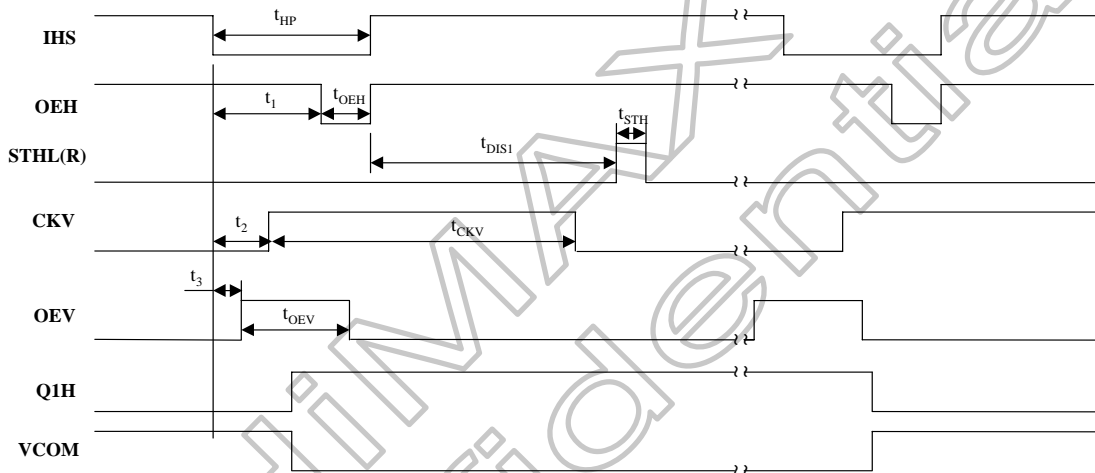
PARAMETER	Symbol	Resolution				Unit
		1440	1200	960	480	
Clock period ⁽¹⁾	t_{CPH}	3				t_C
Clock pulse duty	t_{CWH}	50				%
STH setup time	t_{SUH}	$t_{CPH}/2$				ns
STH pulse width	t_{STH}	1				t_{CPH}
OEH pulse width	t_{OEH}	12	10	8	4	t_{CPH}
Sample & hold disable time	t_{DIS1}	59	41	33	17	t_{CPH}
CKV pulse width	t_{CKV}	36	30	24	12	t_{CPH}
OEV pulse width	t_{OEV}	48	40	32	16	t_{CPH}
HS-OEH time	t_1	42	35	28	14	t_{CPH}
HS -CKV time	t_2	24	20	16	8	t_{CPH}
HS -OEV time	t_3	6	5	4	2	t_{CPH}
STV setup time	t_{SUV}	18	15	12	6	t_{CPH}
STV pulse width	t_{STV}	1				t_H
VS-STV time	NTSC	t_{VS1}				t_H
	PAL	t_{VS1}				t_H
OEH-STV time	t_{OES}	2				t_H

8.2.3 18-bit Digital RGB Input Interface

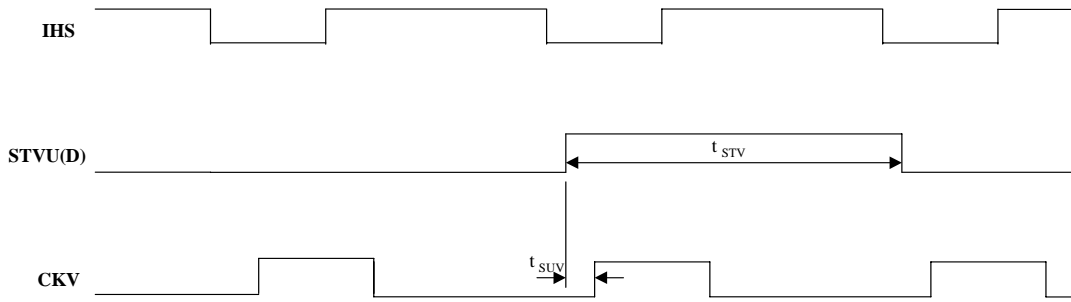
PARAMETER	Symbol	Resolution				Unit
		1440	1200	960	480	
Clock period	t_{CPH}	1				t_C
Clock pulse duty	t_{CWH}	50				%
STH setup time	t_{SUH}	$t_{CPH}/2$				ns
STH pulse width	t_{STH}	1				t_{CPH}
OEH pulse width	t_{OEH}	12	10	8	4	t_{CPH}
Sample & hold disable time	t_{DIS1}	58.5	40.5	32.5	16.5	t_{CPH}
CKV pulse width	t_{CKV}	36	30	24	12	t_{CPH}
OEV pulse width	t_{OEV}	48	40	32	16	t_{CPH}
HS-OEH time	t_1	42	35	28	14	t_{CPH}
HS -CKV time	t_2	24	20	16	8	t_{CPH}
HS -OEV time	t_3	6	5	4	2	t_{CPH}
STV setup time	t_{SUV}	18	15	12	6	t_{CPH}
STV pulse width	t_{STV}	1				t_H
VS-STV time	NTSC	t_{VS1}				t_H
	PAL	t_{VS1}				t_H
OEH-STV time	t_{OES}	2				t_H



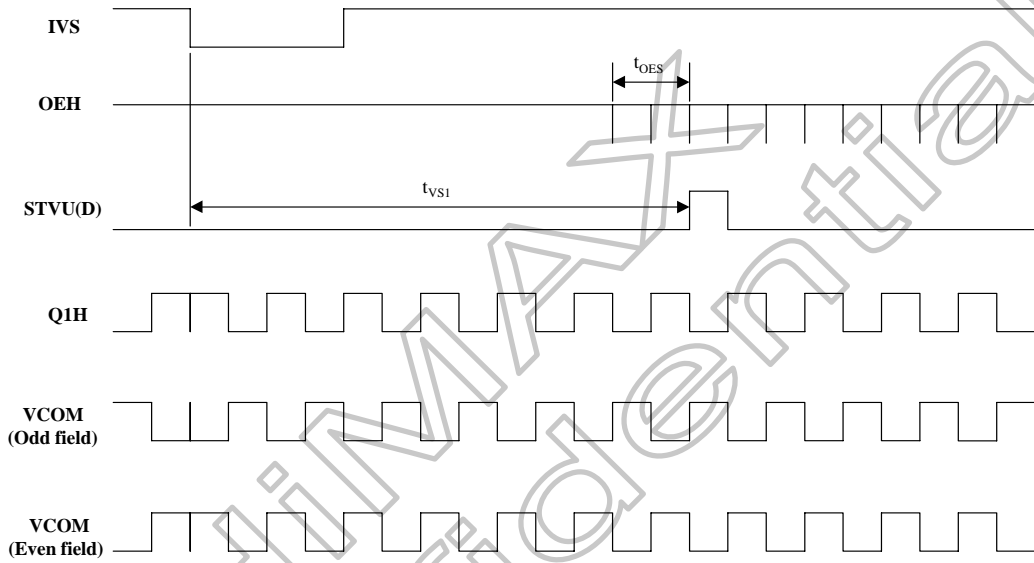
IDCLK, STHL(R) and CPH timing waveform



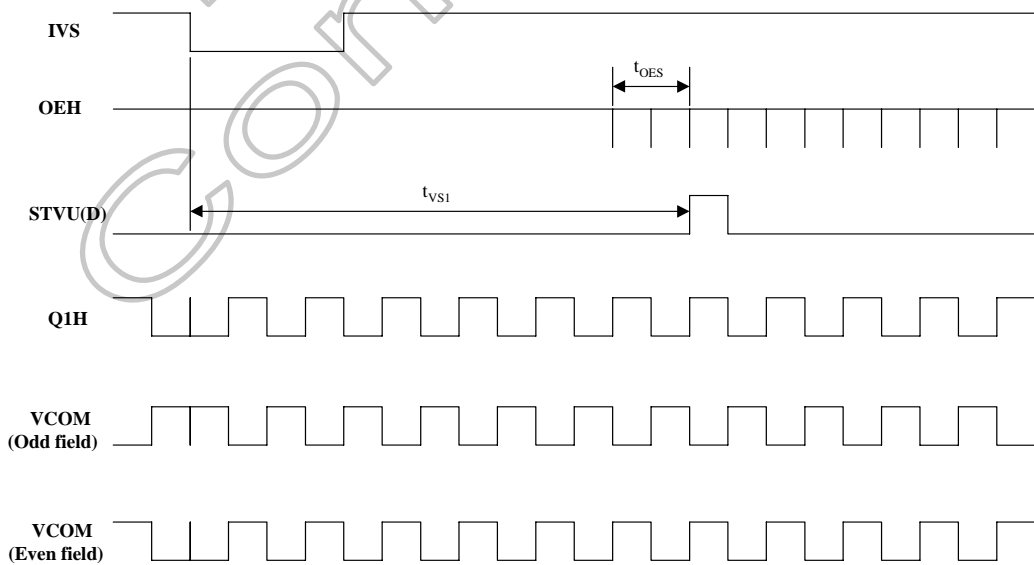
IHS and horizontal control timing waveform



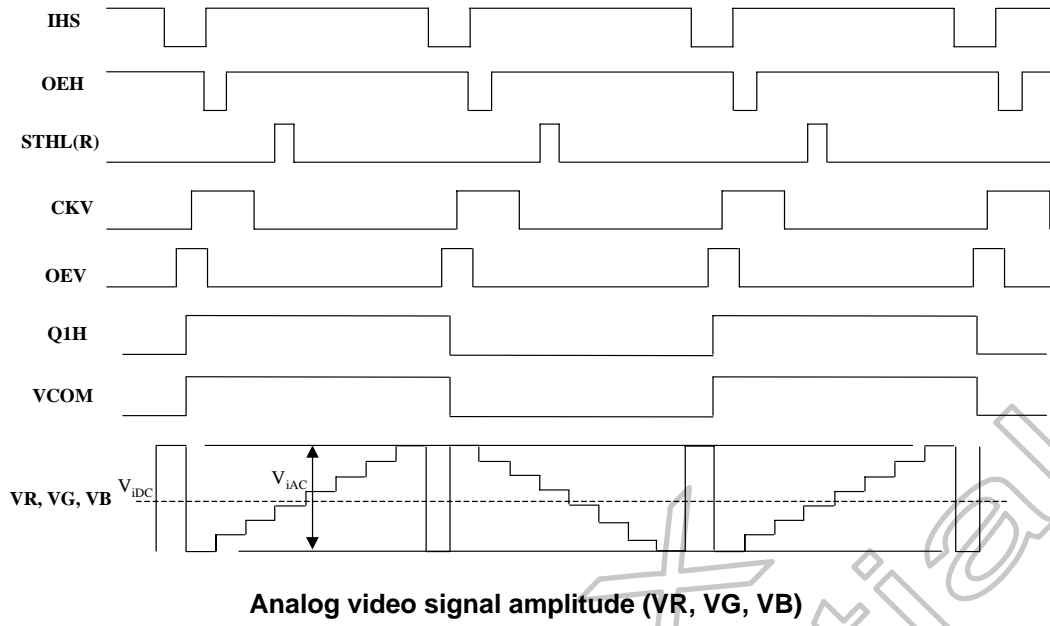
IHS and vertical shift clock timing waveform



IHS and vertical control timing waveform (for the case of UDC="H")



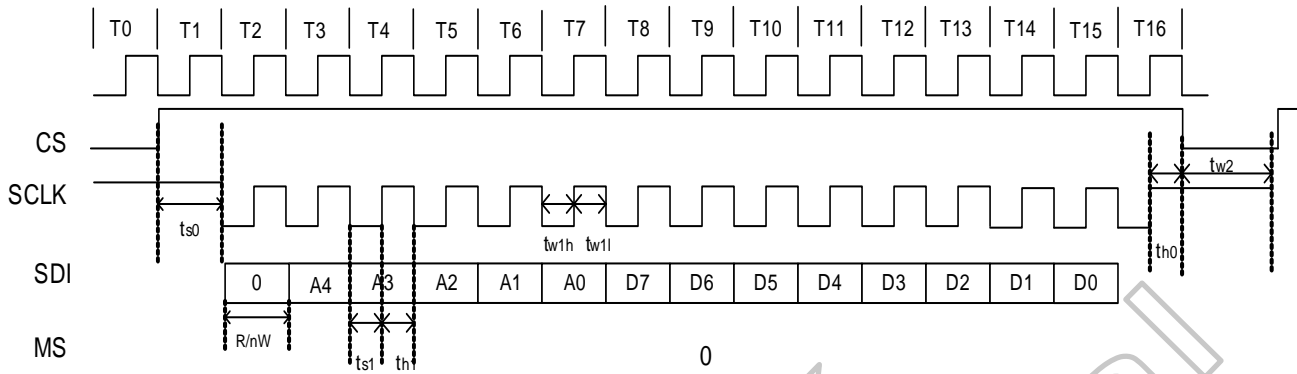
IHS and vertical control timing waveform (for the case of UDC="L")



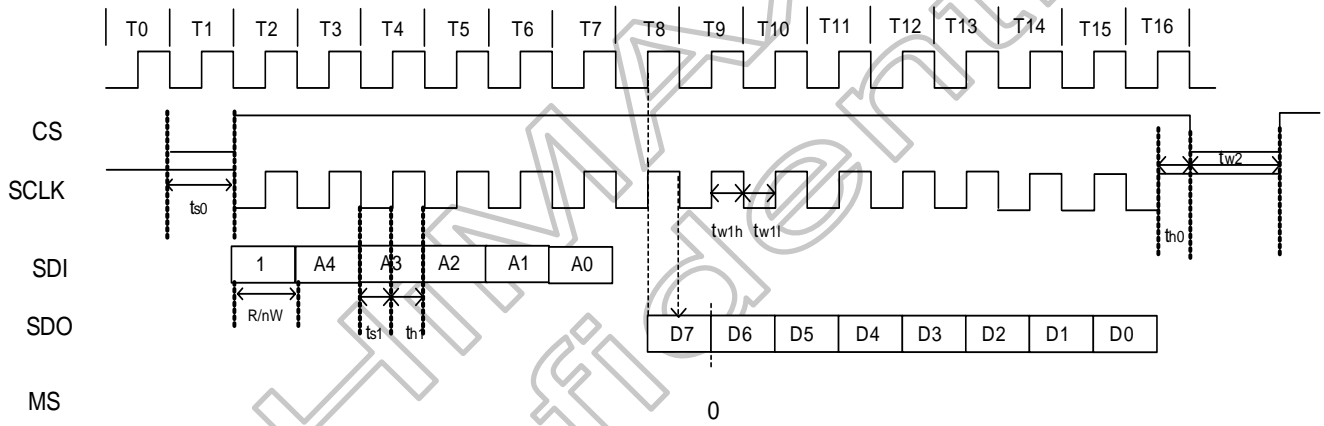
HIMAX
Confidential

8.3 SPI Interface

8.3.1 Slave Mode, Written through SPI Interface

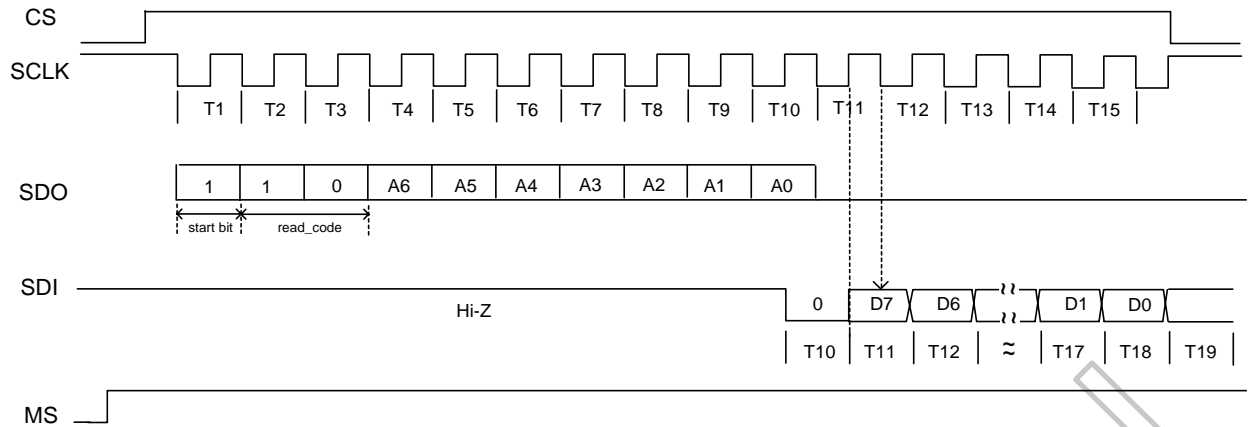


8.3.2 Slave Mode, Read through SPI Interface



Item	Symbol	Conditions	Min	Typ	Max	Unit
Data Setup Time	ts0	CS to SCLK	300			ns
	ts1	DATA to SCLK	150			ns
Data Hold Time	th0	CS to SCLK	150			ns
	th1	DATA to SCLK	150			ns
Pulse Width	tw1L	SCLK pulse width	160			ns
	tw1H	SCLK pulse width	160			ns
	tw2	CS pulse width	1.0			us
Clock duty			40		60	%

8.3.3 Master Mode, Access Data from EERPOM When Power On



Note: please refer to 93C46 datasheet

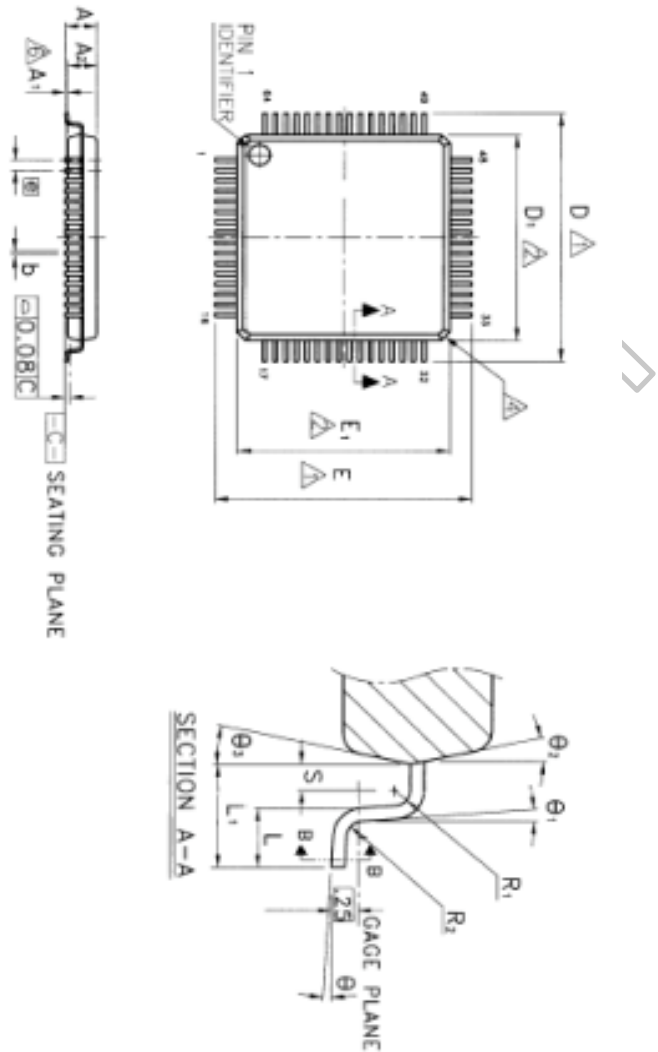
HIMAX Confidential

9. Analog video signal characteristics

PARAMETER	Symbol	Min.	Typ.	Max.	Unit.
Video signal amplitude (VR, VG, VB)	V_{IAC}	-	4	-	V
	V_{IDC}	-	2.5	-	V

HIMAX
Confidential

10. Package Outline Dimension



- NOTE :
- △ TO BE DETERMINED AT SEATING PLANE \square C.
 - △ DIMENSIONS D1 AND E1 DO NOT INCLUDE MOLD PROTRUSION. D1 AND E1 ARE MAXIMUM PLASTIC BODY SIZE DIMENSIONS INCLUDING MOLD MISMATCH.
 - △ DIMENSION b DOES NOT INCLUDE DAMBAR PROTRUSION. DAMBAR CAN NOT BE LOCATED ON THE LOWER RADIUS OF THE FOOT.
 - △ EXACT SHAPE OF EACH CORNER IS OPTIONAL.
 - △ THESE DIMENSIONS APPLY TO THE FLAT SECTION OF THE LEAD BETWEEN 0.10 mm AND 0.25 mm FROM THE LEAD TIP.
 - △ A1 IS DEFINED AS THE DISTANCE FROM THE SEATING PLANE TO THE LOWEST POINT OF THE PACKAGE BODY.
 - 7. CONTROLLING DIMENSION : MILLIMETER.
 - 8. REFERENCE DOCUMENT : JEDEC WS-026 , BCD.

Symbol	Dimension in mm			Dimension in inch		
	Min	Norm	Max	Min	Norm	Max
A	—	—	1.50	—	—	0.063
A ₁	0.05	—	0.15	0.002	—	0.006
A ₂	1.35	1.40	1.45	0.053	0.055	0.057
b	0.17	0.22	0.27	0.007	0.009	0.011
b ₁	0.17	0.20	0.23	0.007	0.008	0.009
c	0.09	—	0.20	0.004	—	0.008
c ₁	0.09	—	0.16	0.004	—	0.006
D	12.00	BSC	—	0.472	BSC	—
D ₁	10.00	BSC	—	0.394	BSC	—
E	12.00	BSC	—	0.472	BSC	—
E ₁	10.00	BSC	—	0.394	BSC	—
⌀	0.50	BSC	—	0.020	BSC	—
L	0.45	0.60	0.75	0.018	0.024	0.030
L ₁	1.00	REF	—	0.039	REF	—
R ₁	0.08	—	—	0.003	—	—
R ₂	0.08	—	0.20	0.003	—	0.008
S	0.20	—	—	0.008	—	—
θ	0°	3.5°	7°	0°	3.5°	7°
θ ₁	0°	—	—	0°	—	—
θ ₂	—	12°TYP	—	—	12°TYP	—
θ ₃	—	12°TYP	—	—	12°TYP	—

TITLE: 64LD LQFP (10x10x1.4mm) PACKAGE OUTLINE
-Cu L/F, FOOTPRINT 2.0mm
L/F MATERIAL: C7025 1/2H

11. Ordering Information

Part NO.	Package
HX8817ALAG	64pin LQFP

12. Revision History

Version	EFF.DATE	DESCRIPTION OF CHANGES
01	2004/03/16	New setup
02	2004/10/19	1. Update pin assignment diagram 2. Update PWM enable register 3. Update the default gamma curve 4. Update SPI interface timing 5. Update ordering information
03	2004/12/16	1. Update general description and features with RGB interfaces 2. Update operation temperature range